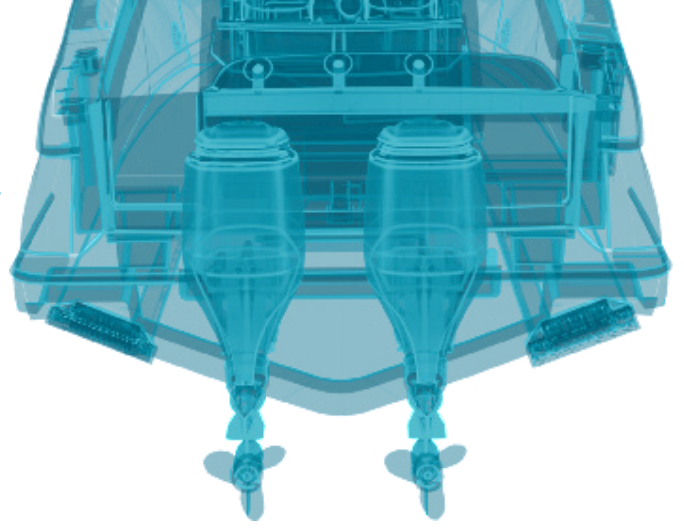


# SEAKEEPER RIDE SEA TRIAL REPORT

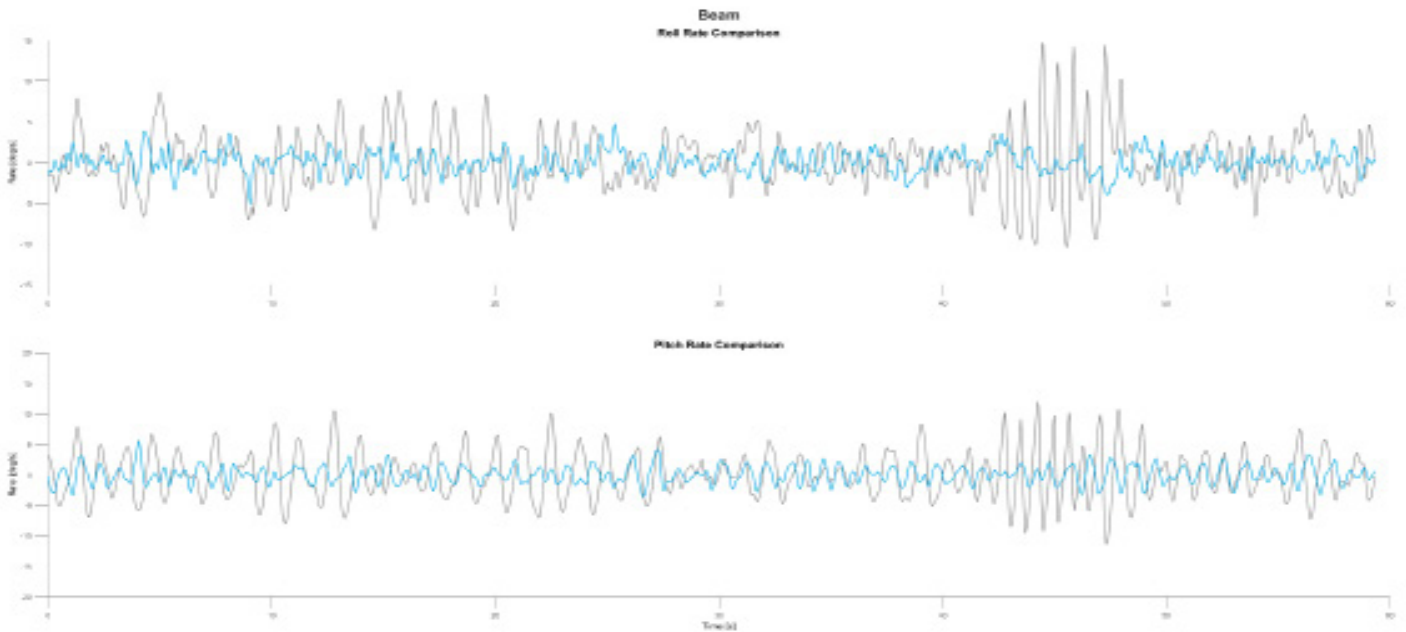
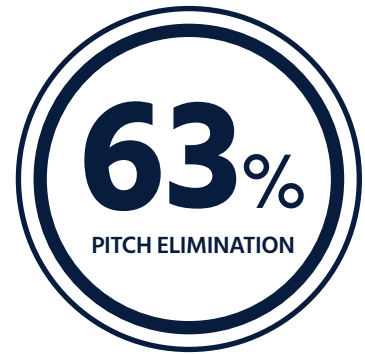
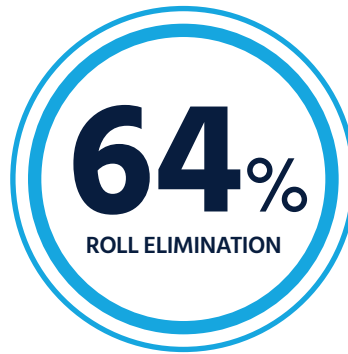


## Vessel Characteristics

Boat Make	Scout Boats
Boat Model	260 LXF
Boat Year	2024
System	450
Length Overall	26' 0"
Beam Overall	8' 11"
Engine Configuration	2x Yamaha 200 hp
Displacement	5,300 lbs.

## Test Conditions

Date	November 9, 2023
Location	Charleston, SC
Speed	30 mph
Seas	Beam
Sea Conditions	1-2 ft. confused seas



Performance results are measured with the system on and off as a reduction of standard deviation in pitch and roll rates at all frequencies at a constant heading and speed.